



EXPOSURE: GET IT RIGHT IN THE CAMERA

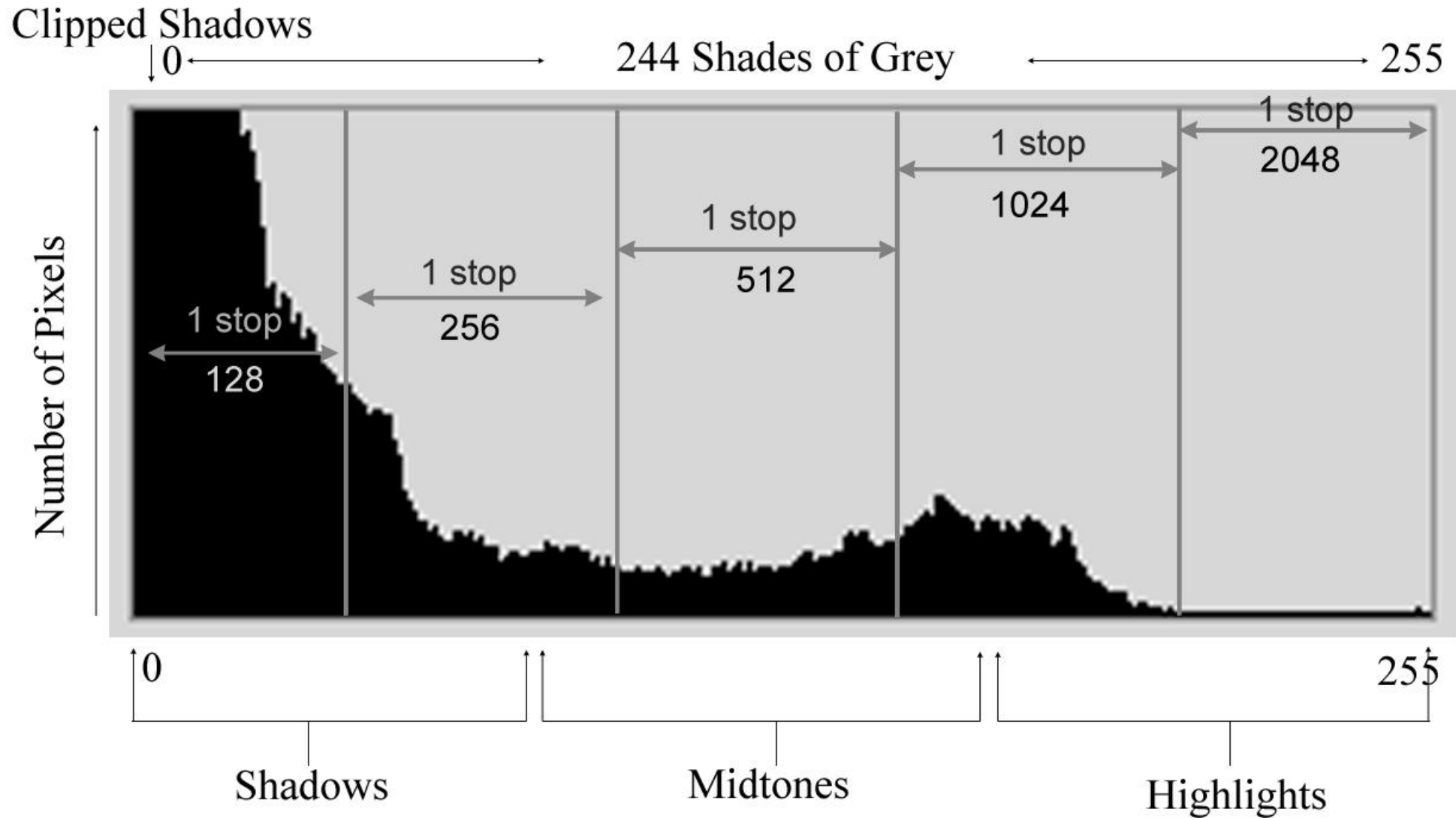
LARRY PETTERBORG

SUMMER, 2022

SESSION THREE

1. REVIEW HISTOGRAM
2. EXPOSURE COMPENSATION
3. EXPOSE TO THE RIGHT (ETTR)
4. HOMEWORK
5. EXPOSURE BLENDING
6. TIPS

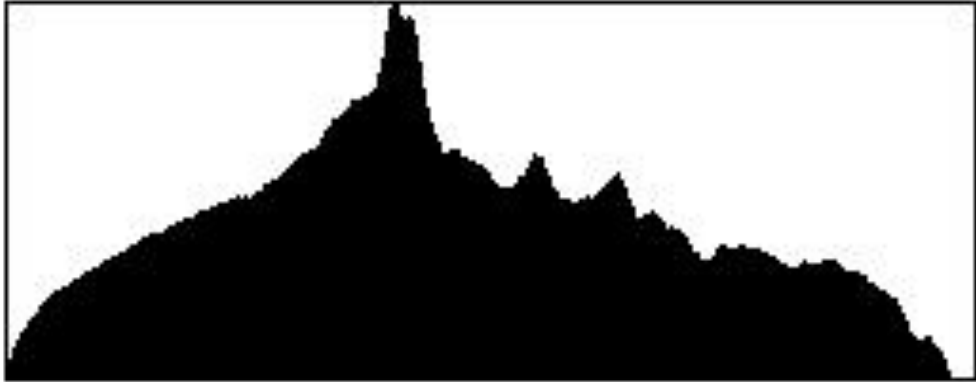
HISTOGRAMS



EXPOSURE COMPENSATION



ETTR



HOME
WORK

DENNIS FRITSCHÉ



190 MM, F 5.6, 1/1250 SEC, ISO 25600



190 MM, F 2.8, 1/1000 SEC, ISO 11400, -1/3

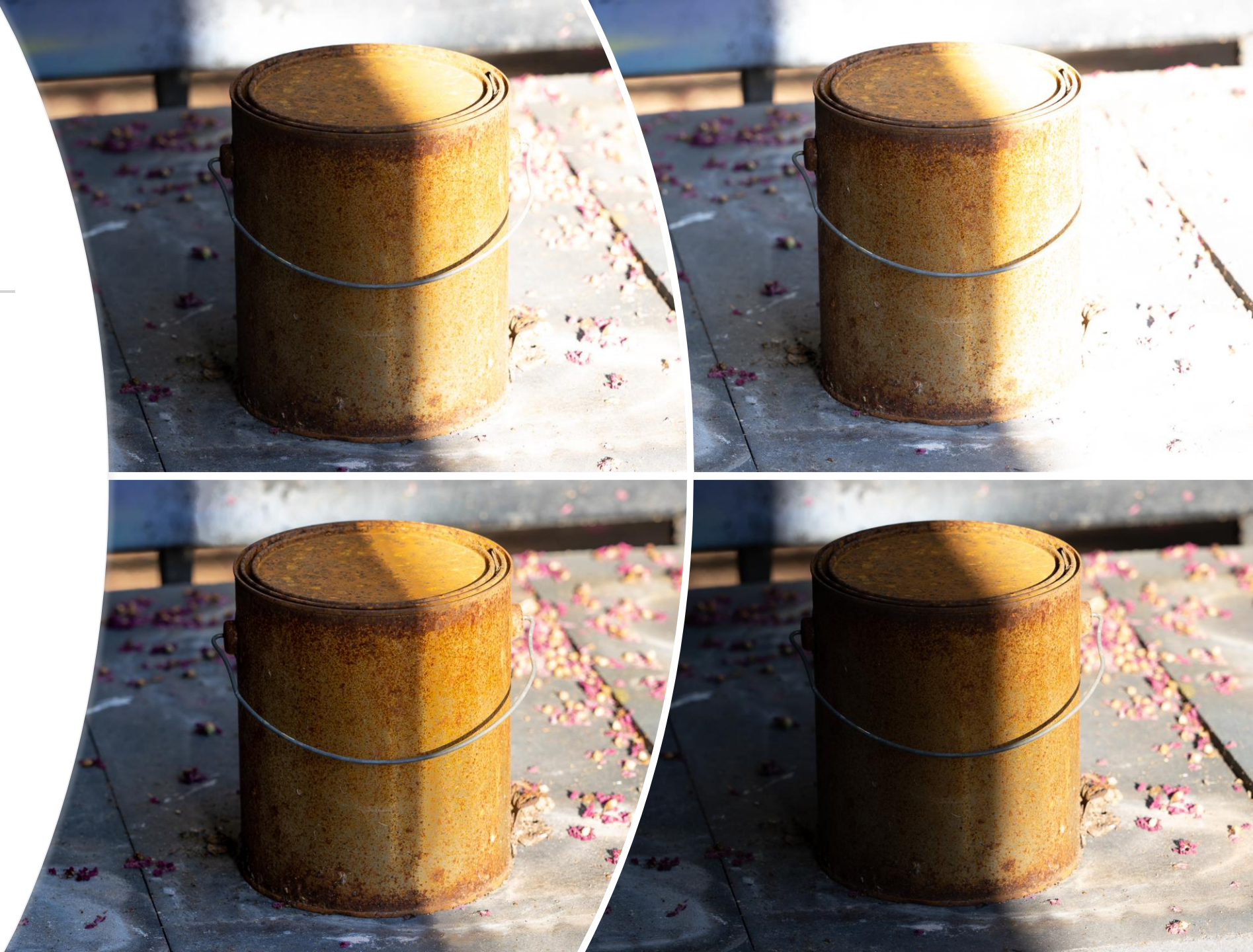
NEW STUFF

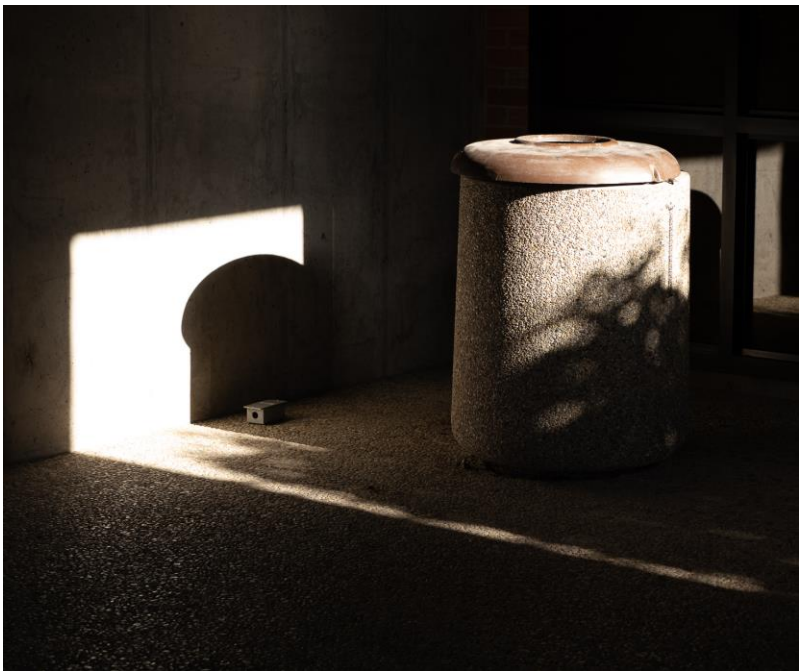
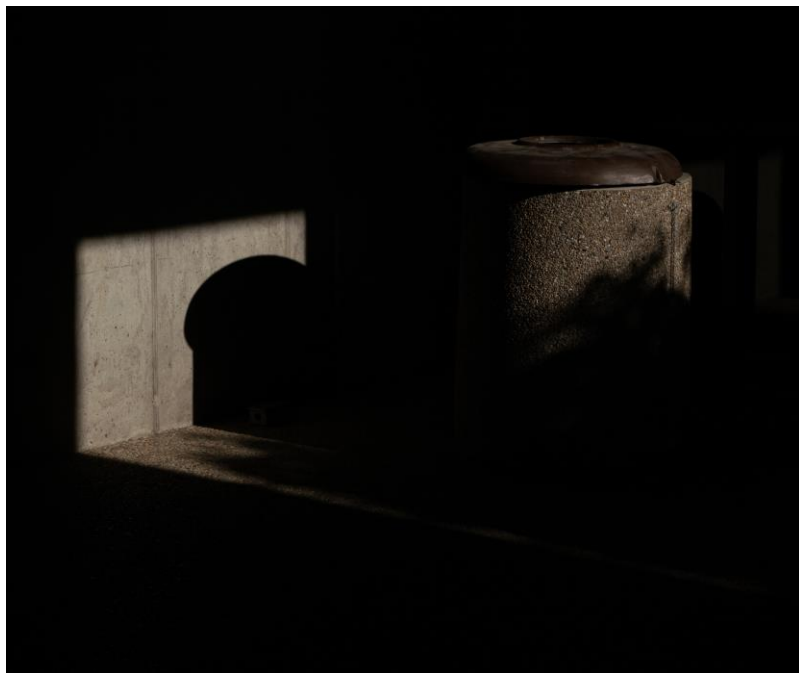


EXPOSURE BLENDING (HDR)

TO INCREASE THE DYNAMIC RANGE IN AN IMAGE, YOU CAN TAKE MULTIPLE SHOTS OF THE SUBJECT AT DIFFERENT EXPOSURES AND COMBINE THEM IN SOFTWARE TO GET THE BEST PARTS OF EACH.

([Auto Exposure Bracketing - Digital Photo \(dpmag.com\)](http://dpmag.com))





A top-down view of a collection of various cameras, including vintage rangefinders, SLRs, and modern mirrorless models, arranged on a dark, textured surface. The cameras are in various orientations, showcasing different lenses, viewfinders, and body designs. Some have visible serial numbers and lens specifications. The lighting is dramatic, highlighting the metallic and leather textures of the cameras.

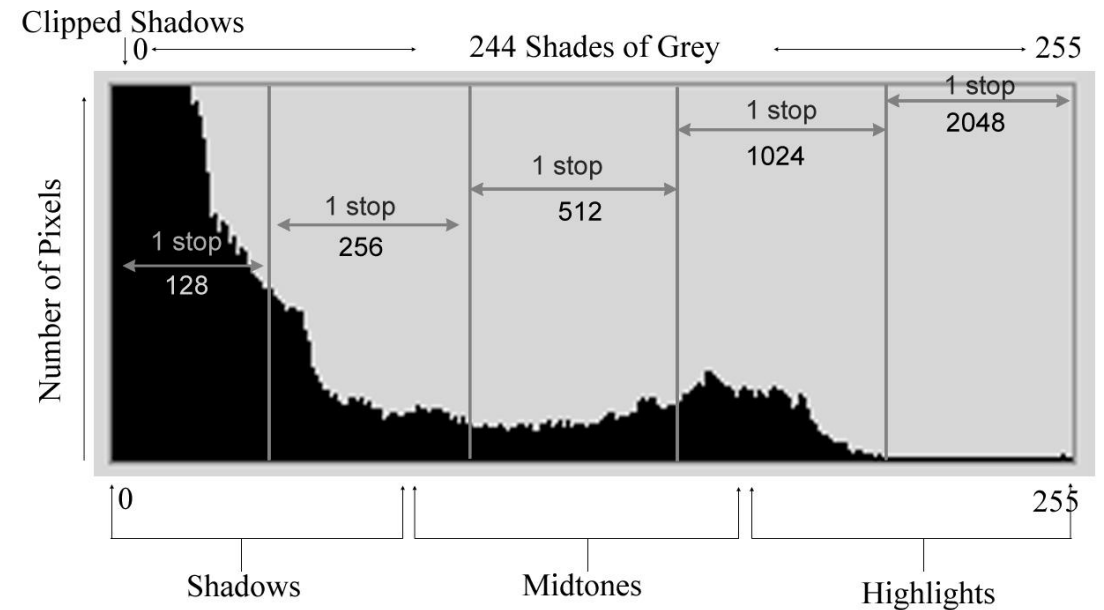
MY CAMERA SET-UP

BASED ON RECCOMENDATIONS FROM
PETER FORSGARD FOR OM-1 (<https://youtu.be/qPhrV0mj40Y>)



MY SETTINGS

- I SHOOT **RAW**
- DISPLAY MODE IS MUTED WITH -2 CONTRAST AND -2 SATURATION
- ADOBE RGB COLOR SPACE
- HIGHLIGHT AND SHADOW WARNINGS ON (BLINKYS, ZEBRAS ECT.)
- HISTOGRAM SET AT 254 AND 1



TIPS

1. TAKE MORE PICTURES
2. MAKE MORE THOUGHT SHOTS
3. HANG AROUND PEOPLE THAT KNOW MORE THAN YOU DO
4. ASK QUESTIONS
5. RE-SET CAMERA TO DEFAULTS EVERY DAY
6. DON'T BE AFRAID OF HIGH ISO
7. SIGN-UP FOR A REGULAR NEWSLETTER OR YOUTUBE
8. HAVE FUN

RESOURCES

- [Home : Michael Frye Photography](#)
- [Landscape Photography by Nigel Danson | UK](#)
- [Backcountry Gallery | Wildlife And Nature Photography By Steve Perry](#)
- [Landscape Art | Mads Peter Iversen Photography \(mpipphoto.dk\)](#)
- [https://youtu.be/IAEwNvT9Mxc](#) Nick Page, PS Expo Blending

Any
1.1

Questions