



NATURE PHOTOGRAPHY

My Passion

By Larry Petterborg

A LITTLE ABOUT ME

- I GREW UP IN UTAH
- I PREFER TO BE OUTSIDE
- I HAVE ADVANCED DEGREES IN BIOLOGY AND BIOMEDICAL SCIENCES

WHAT IS NATURE PHOTOGRAPHY?

(ADAPTED FROM THE PHOTOGRAPHIC SOCIETY OF AMERICA)

NATURE PHOTOGRAPHY IS THAT BRANCH OF PHOTOGRAPHY THAT SEEKS TO CAPTURE “ALL ASPECTS OF THE PHYSICAL WORLD, BOTH ANIMATE AND INANIMATE, THAT HAVE NOT BEEN MADE OR MODIFIED BY HUMANS”.

WHAT IS NATURE PHOTOGRAPHY?

FOR IMAGES ENTERED INTO A "NATURE PHOTOGRAPHY" CONTEST:

"The story telling value of a photograph must be weighed more than the pictorial quality while maintaining high technical quality. Human elements shall not be present, except where those human elements enhance the nature story. The presence of scientific bands, scientific tags or radio collars on wild animals is permissible. Photographs of artificially produced hybrid plants or animals, mounted specimens, or obviously set arrangements, are ineligible, as is any form of manipulation that alters the truth of the photographic statement."

GULF STATES CAMERA CLUB COUNCIL

WHAT IS NATURE PHOTOGRAPHY?

- LANDSCAPE
- SEASCAPE
- WILDFLOWERS
- TREES
- MACRO
- WILDLIFE

LANDSCAPES









BRYCE CANYON



LANDSCAPE TIPS

1. USE A TRIPOD
2. SHOOT BEFORE 10 AM OR AFTER 4 PM
3. PLAN FOR MAXIMUM DEPTH OF FIELD
4. CREATE DEPTH

SEASCAPES











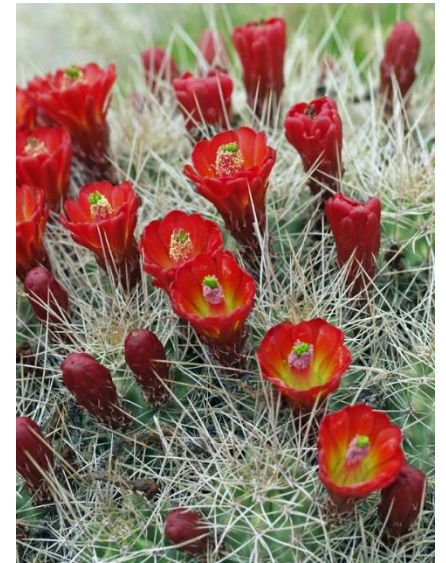
TIPS FOR SEASCAPES

1. USE A TRIPOD
2. GET OUT BEFORE 10 AND AFTER 4
3. CONSULT A TIDE TABLE
4. BE PREPARED FOR GETTING WET
5. MAKE SURE TO RINSE SALT OFF

WILDFLOWERS









TIPS FOR WILDFLOWERS

1. USE A TRIPOD IF POSSIBLE
2. FOR SATURATED COLORS, USE A POLARIZING FILTER AND/OR PHOTOGRAPH IN SHADE OR DURING OVERCAST CONDITIONS
3. PAY ATTENTION TO WHAT IS BEHIND YOUR SUBJECT, ELIMINATE DISTRACTIONS BEFORE YOU SHOOT

TREES





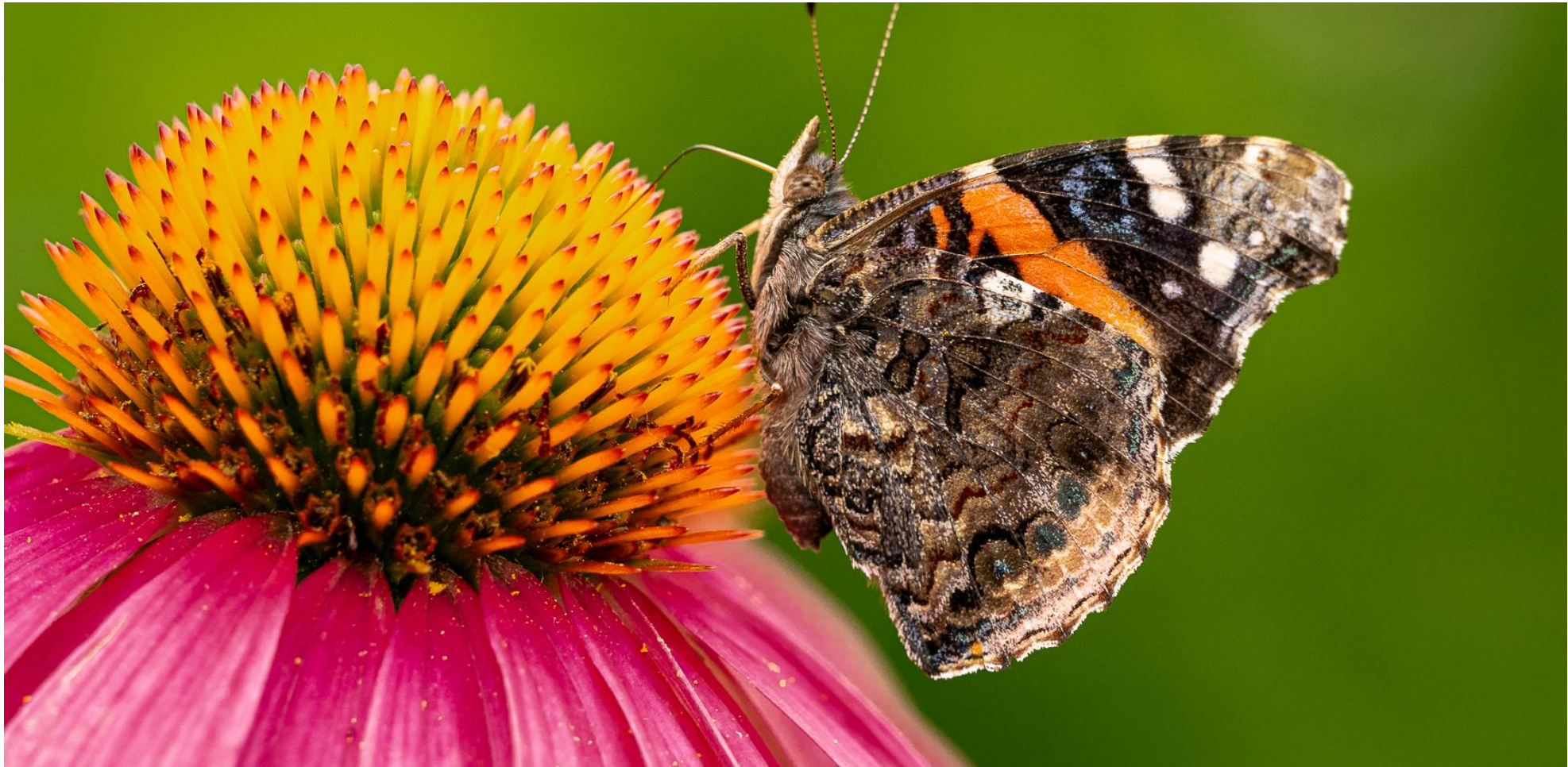




TIPS FORTREES

- ASK DENNIS

MACRO







MACRO TIPS

1. GET CLOSE!
2. PAY ATTENTION TO BACKGROUNDS
3. YOU DO NOT NEED A “MACRO” LENS, BUT IT SURE HELPS
4. ADD LIGHT WITH FLASH OR REFLECTORS
5. TRY FOCUS STACKING

WILDLIFE



TIP #1: GET A BIG LENS



TIP #2

GO TO WHERE THE ANIMALS ARE

- SANTA CLARA RANCH, SOUTH TEXAS
- KATMAI, ALASKA
- PATAGONIA
- AFRICA
- MISCELLANEOUS





**TIP #3: GO WITH
SOMEONE**



**SANTA CLARA
RANCH,
SOUTH TEXAS**



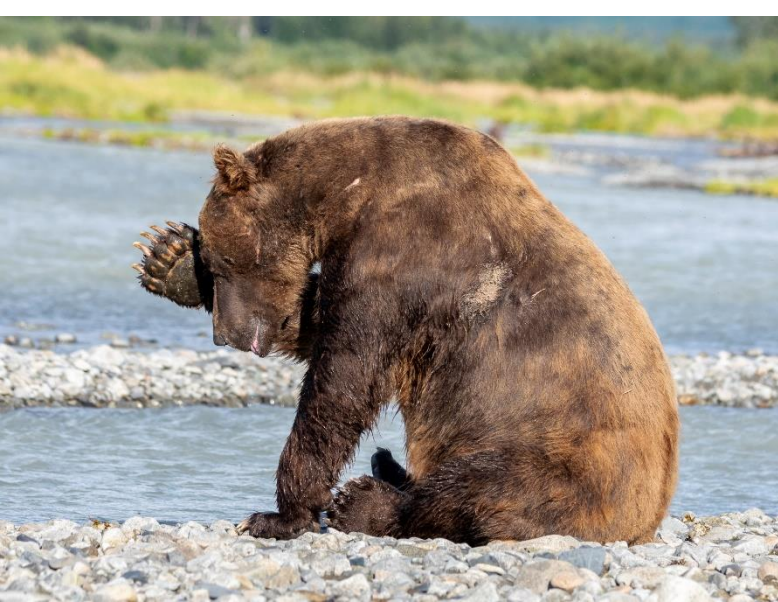




KATMAI, ALASKA





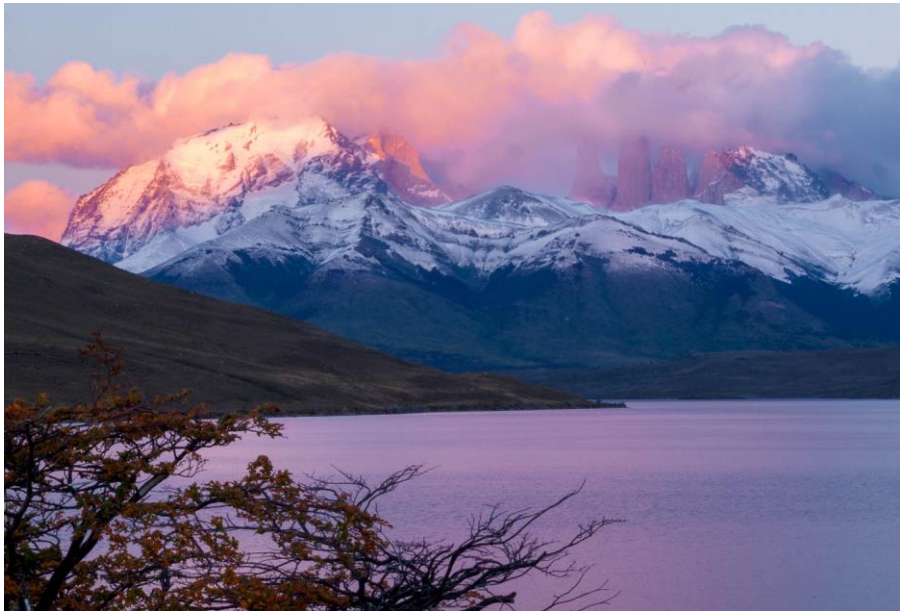








PATAGONIA

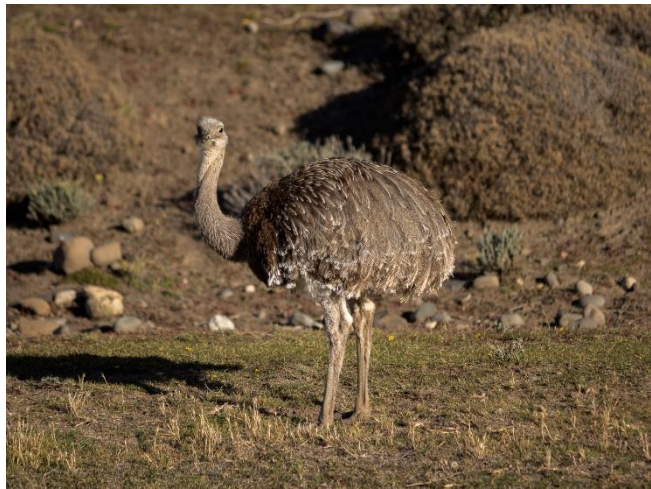












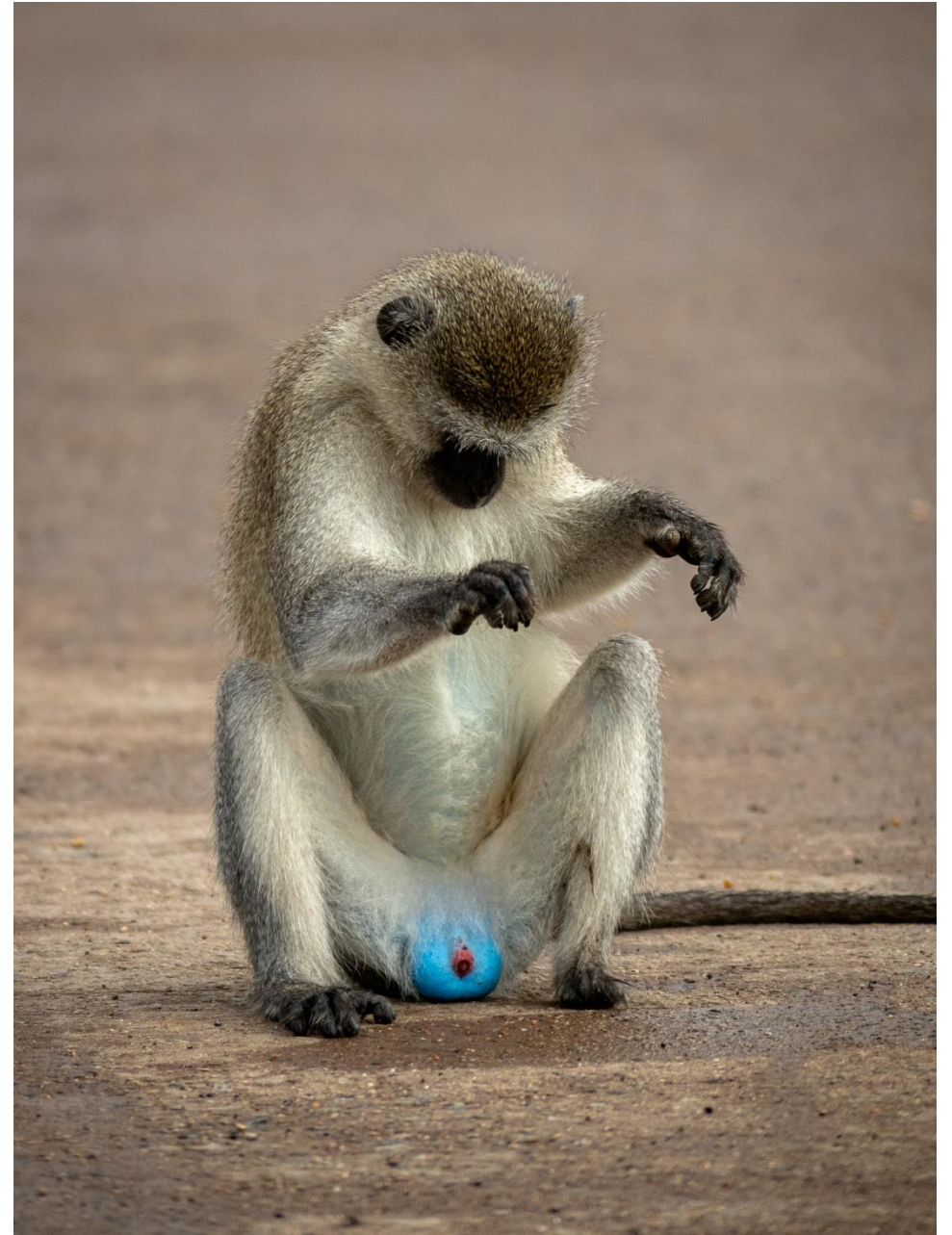


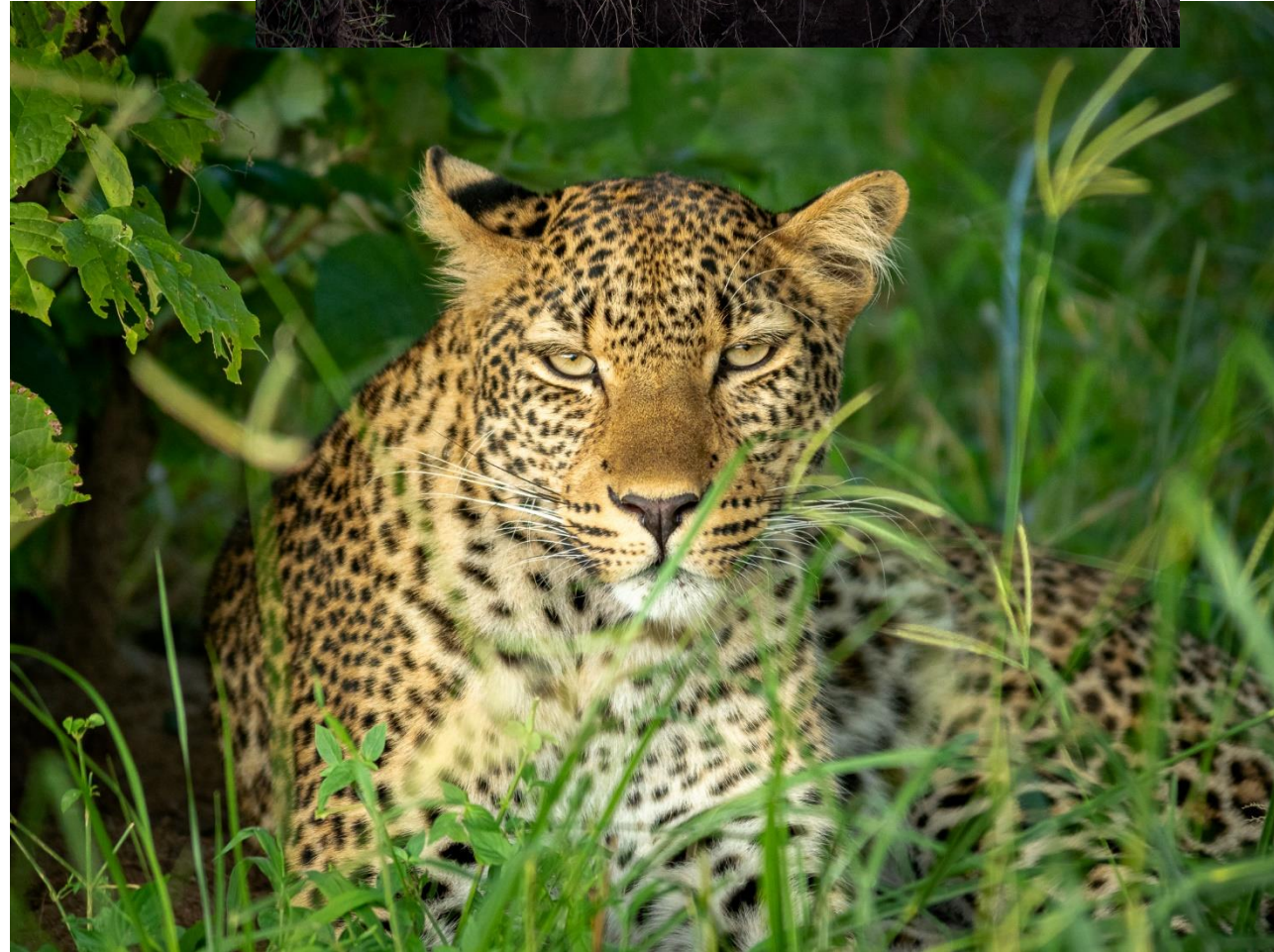


AFRICA























MISCELLANEOUS

- NATIONAL PARKS
- NATIONAL WILDLIFE REFUGES
- NATIONAL FORESTS
- STATE PARKS
- FRONT AND BACKYARDS
- ZOOS



DEATH VALLEY NP



SAN JUAN NATIONAL
FOREST, COLORADO





GRANITE SHOALS, TEXAS



**WICHITA
MOUNTAINS
NWR**





**CAPROCK CANYONS
STATE PARK, TEXAS**

DALLAS ZOO



GENERAL TIPS FOR WILDLIFE

1. DO YOUR HOMEWORK
2. BE PATIENT
3. PAY ATTENTION TO THE BACKGROUND
4. BE ETHICAL
5. [How to Take Even Better Wildlife Photos \(photographylife.com\)](#)
6. [10 Action In Nature Quick Tips - Outdoor Photographer](#)

Q & A



